



## Principal's Coffee Chat June 15, 2020

### **FALL REOPENING DRAFT PLANS**

slides adapted from Superintendent, Dr. Joan Rosas

# Guidance

- Follow the Health Orders of the Public Health Officer
- Guidelines delineated in the San Mateo County Office of Education Framework for Reopening
  - Developed w/consideration from international, national, CDE, CDC, County Health, SMCOE

# COVID 19-Regulations

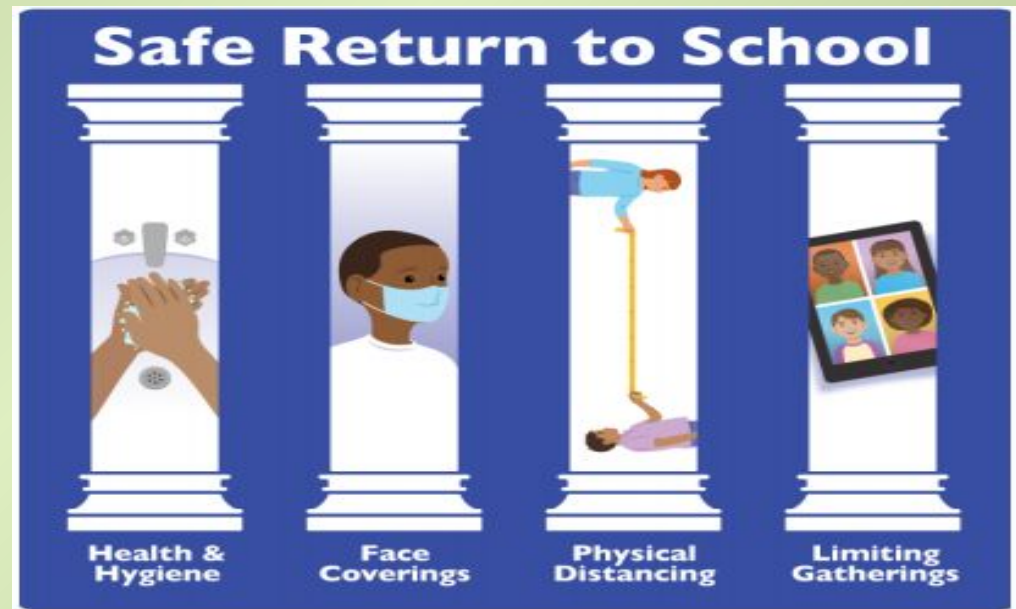
- Plans and protocols may shift rapidly
- Please be attentive to email updates over summer

# Framework for Reopening

*San Mateo County released: June 10, 2020*

## 4 Pillars:

1. Health and Hygiene
2. Face Coverings
3. Physical Distancing
4. Limiting Gatherings



# Pillar 1: Health and Hygiene

- Post signage
- Stay at home if ill
- Establish hand washing protocols
- Establish a protocol for taking temperatures
- Establish cleaning protocols
- Maximize air flow - use outdoor space

# Pillar 2: Face Coverings

- students and Staff must wear masks
- Why? Highly effective in curbing the spread of the virus
- Masks can be cloth, fabric or other permeable material without holes which covers the nose, mouth and lower face
- No need to be medical grade
- **CDC recommends 2 years and up**

# Pillar 3: Physical Distancing

- Reorg school so students remain 6' apart
- Rethink common space...recesses and lunch
- Half the students on campus at any one time...(doesn't mean that 3rd grade is there and 2nd grade is not)
- Not bubble cohorts but stable cohorts
- PE - no contact

# Bubble Cohort vs Stable Cohort

- Bubble Cohort: 12 students
  - no subs allowed
  - no mixing of students
  - can not add new students or staff
- Stable Cohort no specific # of students
  - reduce mixing as much as possible
  - half a class



# Pillar 4: Limit Gatherings

- No meetings on campus
- No visitors
- No extracurricular events
- No gatherings

# Phased Approach - Phase I

- Most restrictive — dependent on community spread data
- No on-campus visitors or volunteers
- No extracurricular activities or athletics
- All meetings held remotely
- No gatherings
- Face coverings by all at all times, including during class

# Phased Approach - Phase 2

- Dependent on community spread decline
- Instructionally impactful volunteers and visitors only
- Most meetings held remotely
- Gatherings of no more than 10, following health protocols
- Face coverings must be worn by all at all times, including during class

# Phased Approach - Phase 3

- Least restrictive based on continued decline of community spread
- This is not “normal” school
- Volunteers and visitors allowed, following health protocols
- Instructional and extracurricular activities, small groups
- Gatherings of no more than 50
- *Face coverings must be worn by all when “transiting” the campus and in all common areas*

# Framework is the Anchor

- Be creative
  - use outdoor space
  - maximize air flow (windows and doors)
  - don't be stuck in how we used to do it
  - think outside the box when possible
  - Ingress & Egress
- Equity
- Challenges ahead
  - Building school-wide community
  - Family engagement (creating & maintaining connections)
  - Building confidence: staff, students, families
  - Responding to changing conditions

# A/B Schedule: DRAFT

- Group A
  - M/T, Group B DL at home
- Group B
  - TH/F Group A DL at home
- Wednesday
  - teacher planning
  - professional development
  - collaboration
  - other meetings
- could be a shortened day
- Days listed are not specifically designated at this time

**DRAFT**

# A/B 1 Week on/off: DRAFT

- Group A in class M-TH for one week
  - Group B DL at home
- Group B in class M-TH for one week
  - Group A DL at home
- Friday
  - for teacher planning
  - professional development
  - collaboration
  - other meetings
- could be shortened day
- Days listed are not specifically designated at this time

**DRAFT**

# 100 % Distance Learning

- There will be the option to do 100% Distance Learning
  - District looking at how to do this across our district



# Class Placements 2020-2021

- Move one whole class to next grade teacher
  - continuity
  - students have created community
  - parents know each other
  - teacher collaboration from last year to next
- Follow same procedure of balancing classes

**DRAFT**

# Social Emotional Needs 2020-2021

- District working on plan to support students school wide
- Need to focus on SEL at the beginning of the school year

**DRAFT**

# Summer ideas for student work

- Each Grade level will communicate with families with recommendations for summer work
- District web page has many resources available as well
- Google Classrooms will be accessible over summer
  - students can continue working on incomplete assignments
  - teachers will not be checking or responding to summer work that is completed
- Public library offers programs

# Plan ahead: suggestions for your work

- Share with your boss/manager possible plans for 2020-2021
- Be explicit with your work modification request due to daycare, unsupervised children at home etc.
- Put your requests in writing along with possible plans
- Make sure company knows the State Department of Education has made suggestions; however, all decisions are made by the San Mateo County Health Department: plans subject to change
- Plan for possibility of children at home with 100% DL

# Logistics & Protocols: DRAFT

- Ingress (entering school)
  - temperature checks before entering interior campus
  - No visitors allowed inside interior of campus
  - staggered times
- Egress (exiting school)
  - staggered times
  - No visitors allowed inside interior of campus
- Physical Distancing (6 ft. apart)
- **Masks**
  - students, staff, adults at drop off/pick up
  - inside and outside
  - **Start practicing over summer with kids**
- Handwashing throughout the day

**DRAFT**

# SMFCSD Board Meeting

- June 18, 2020
  - 6:30

– [SMFCSD School Board Agenda Web Page](#)

# Routines & Procedures:

## Start the conversation with your kids

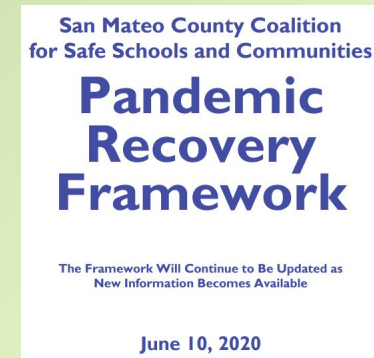
- Hand washing
- Entering and exiting school
- Temperature checks
- ***Illness procedures***
- Directional hallways
- Restroom use and cleaning
- Recess

# Planning with Guidance

## [CDE Stronger Together Guidebook](#)



## [SMCOE Pandemic Recovery Framework: June 10](#)





Please remember...



# Questions/Comments

Thank You

Without you It was never possible. Therefore,  
Thanking you for the amazing help is necessary.

