

Bayside Academy

K-5 STEAM / 6-8 STEM



GATE Parent Tour

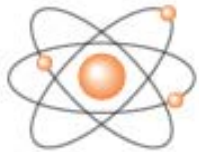
November 15, 2017

Agenda

9:00 am – 9:30 am – Parent Presentation

9:30 am – 10:15 am – Campus Tour

10:15 am – 10:30 pm – Questions



Bayside Academy

Bayside Academy is *One School* with *Two Interconnected Programs*

Parkside STEAM program (K-5) on the West side of campus

Bayside STEM program (6-8) is a fully functional middle school on the East side of campus



STEM Student Population

2017-2018

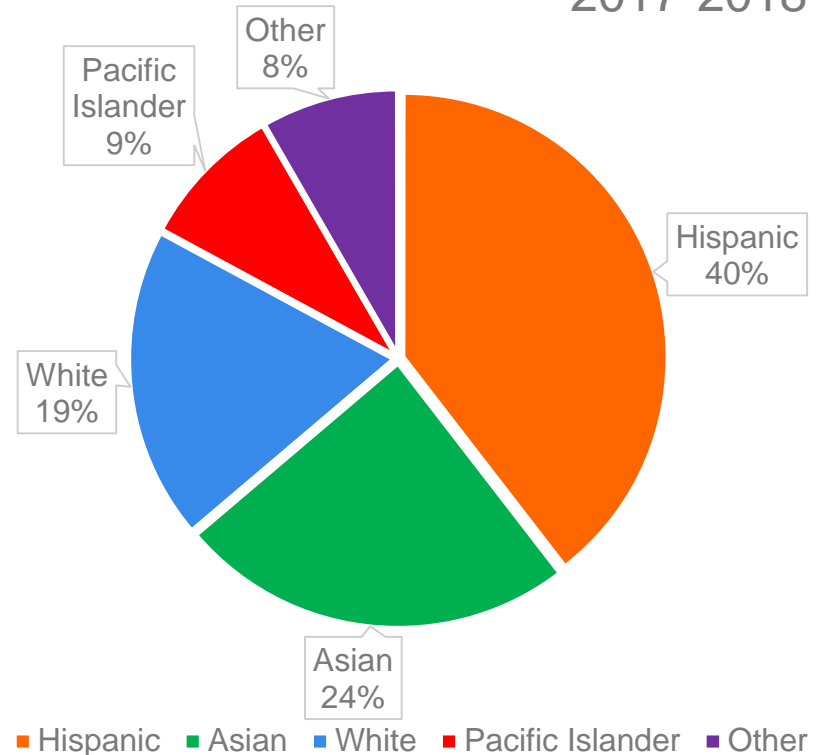
2017 – 2018 Total Enrollment = 908 Students

424 Females, 484 Males

6th Grade: ? Students

7th Grade: ? Students

8th Grade: ? Students



Our Staff

Mr. John Cosmos, Principal

Mrs. Megan Gurka, Assistant Principal 6-8

Ms. Maria Valencia, Assistant Principal K-5

Ms. Christine Calvary, Outreach/Dean

Ms. Lauren Alexander, Counselor

Mr. Steven Chang, Counselor



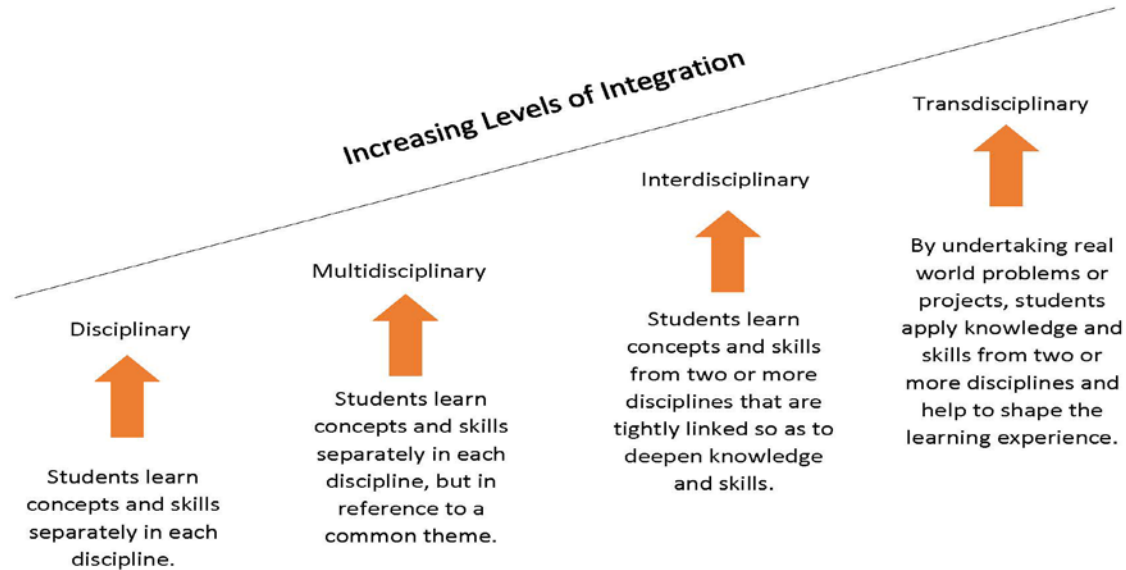
Mission Statement

The mission of the school is to provide a rigorous academic program and to develop accomplished life-long learners, critical thinkers, problem solvers and effective communicators.

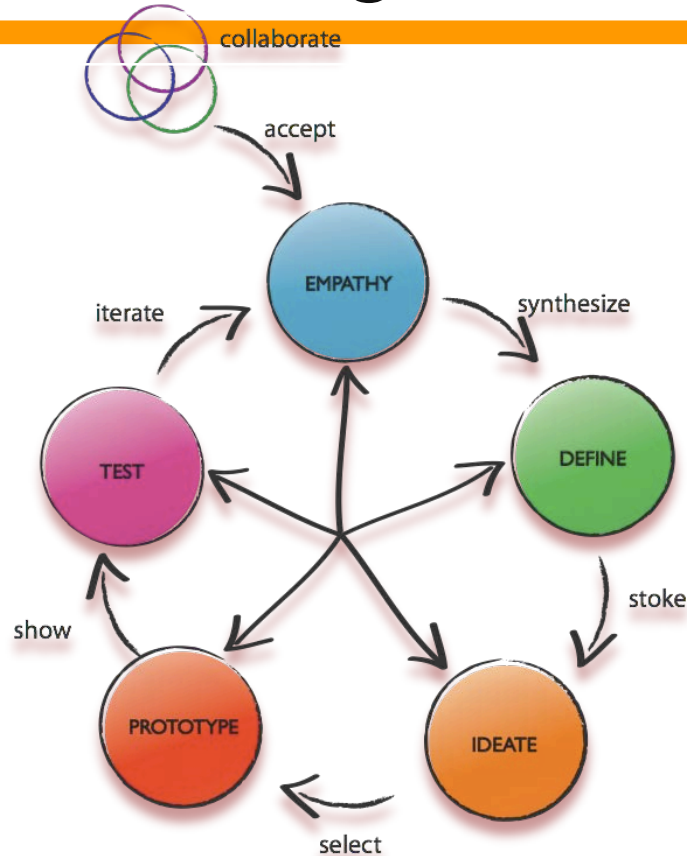
We provide contextualized opportunities for students to practice design thinking and to increase intellectual capacity, self esteem, and social consciousness.

STEM Integration

The Inclined Plane of STEM Integration



Design Thinking *Delete Slide??



California Content Standards

All students at Bayside learn Math and Language Arts through the new State Adopted, high quality, California Content Standards.

- Common Core Math and ELA Standards
- Next Generation Science Standards
- New ELA/ELD Framework
- New Social Studies Framework

These learning goals outline what a student should know and be able to do at the end of each grade.

CAASPP Test Results *Get update from Ali

SBAC ELA						
Grade	# of Students	Standard Not Met	Standard Nearly Met	Standard Met	Standard Exceeded	No Scores
6th	225	49	37	56	83	0
		22%	16%	25%	37%	0%
7th	221	44	47	64	66	0
		20%	21%	29%	30%	0%
8th	189	56	44	56	32	1
		30%	23%	30%	17%	0%
All Grades	635	149	128	176	181	1
		23%	20%	28%	29%	0%
SBAC MATH						
Grade	# of Students	Standard Not Met	Standard Nearly Met	Standard Met	Standard Exceeded	No Scores
6th	225	64	49	31	81	0
		28%	22%	14%	36%	0%
7th	221	63	47	36	75	0
		29%	21%	16%	34%	0%
8th	189	67	51	35	36	0
		35%	27%	19%	19%	0%
All Grades	635	194	147	102	192	0
		31%	23%	16%	30%	0%

Diverse Student Needs

At Bayside, *ALL* of our students are STEM students.

However, we also have a variety of special populations with varying needs:

- English Learners
- Special Education
- GATE (Gifted and Talented Education)
- Mandarin Magnet

We work together to meet the needs of *ALL* students.

Enrichment Opportunities

CLUBS: Lunchtime and after school

Examples include: Art, STEM, Yearbook, Math Circles, Sci Fi, Anime and Drawing, Tutoring, Pride, Mandarin, Bayside GIVES, etc.

SPORTS: After school

Fall: Volleyball, Cross Country, Flag Football

Winter: 7/8 Basketball

Spring: 6th Basketball, Track and Field, Soccer, Tennis

School Climate

At Bayside, we expect **ALL** students to be:

RESPECTFUL

RESPONSIBLE

SAFE



Restorative Practices

Goal : To develop community and to manage conflict and tensions by repairing harm and restoring relationships

Proactive: Classroom community circles

Reactive: Self reflection after infraction



Communication

Schoolloop: Online gradebook, accessible for students and parents

Website: bayside.smfcsd.net

E-Blast: Emailed home every Friday

School Messenger: Automated phone message system

Konstella???

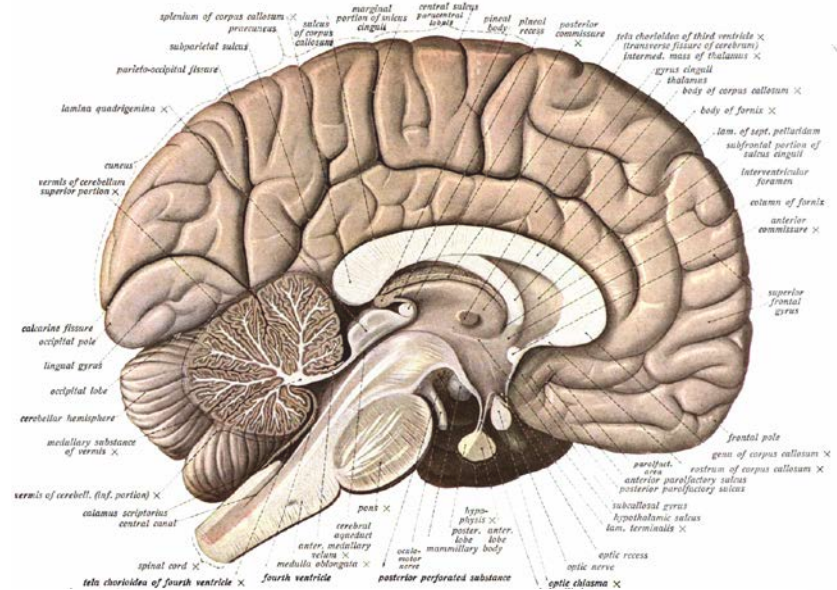


Parent/Community Role

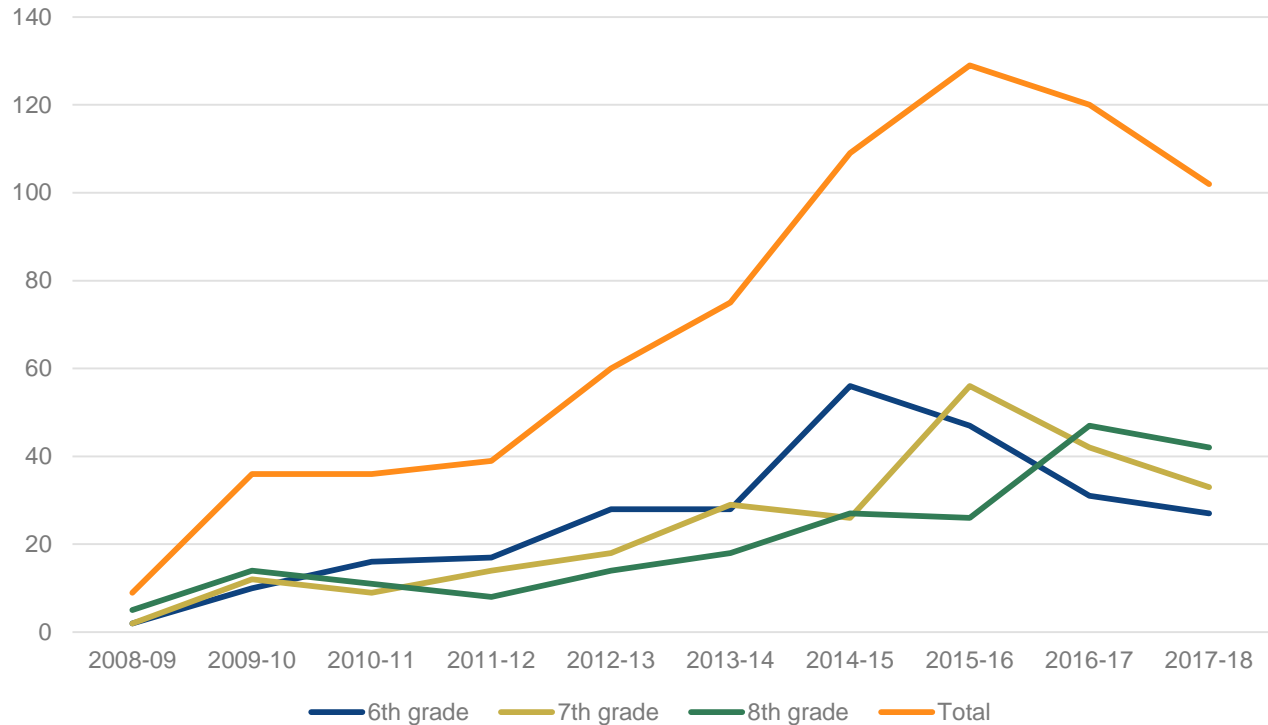
- Attend Conferences, Back-To-School Night, Open House, etc.
- Contribute time/resources
- Participate in PTSA, Site Council, ELAC, Latinos Unidos, etc.
- Field trips
- Clubs
- Be a part of our community!!!

Goals of Gifted Education

Cognitive
Affect
(Social-Emotional)
Physical/Sensory
Intuitive



GATE students at Bayside 2008-2018



Student Schedule

All students take 7 classes

6th & 7th grade: ELA (2 periods), Social Studies, Math, P.E., Science, Elective

8th grade: ELA, Social Studies, Math, P.E., Science, Elective 1, Elective 2

Electives

6th Grade Wheel

- Robotics, Coding, Maker, 3-D Printing
- Design Thinking Foundations
- Intro to Music

OR

- Beginning Band, Strings, or Chorus
- Support Classes for math

7 and 8th Electives

- Maker, 3D, and Robotics
- Art
- Wheel: Aeronautics, Biotech, Astronomy
- Band, Orchestra, Chorus
- Support Classes for math

Student Schedule

All GATE Identified students are in GATE Core classes including:
ELA (2 periods), Social Studies and Science.

PE and Elective classes provide an opportunity to meet other Bayside students

Student Schedule

GATE classes follow the same Common Core Standards found in all classes, but students are encouraged to dive deeper into the curriculum.

GATE teachers push students to be creative thinkers and problem solvers through rigorous projects using higher level thinking.

Student Schedule - Math

Most students in 6th grade take 6th Grade Math using the rigorous Common Core State Standards.

However...

Some students qualify for the compacted pathway which includes a rich diversity of students.

Invitations to the compacted pathways are based on a series of District criteria.

How do I apply for GATE at Bayside?

This is a District placement, not a transfer

- A. **Tuesday, January 17???** - form posted on website
- B. **Friday, February 10???** - 12:00 noon Request for Placement Window closes

Request for Placement is on District website

www.sfmcsd.net/gate



How do I apply for GATE at Bayside?

Decisions and Memorandum of Understanding will be mailed by the District by ????? and instructions will be included in the letter.

****Is this still the process?**



Tour

