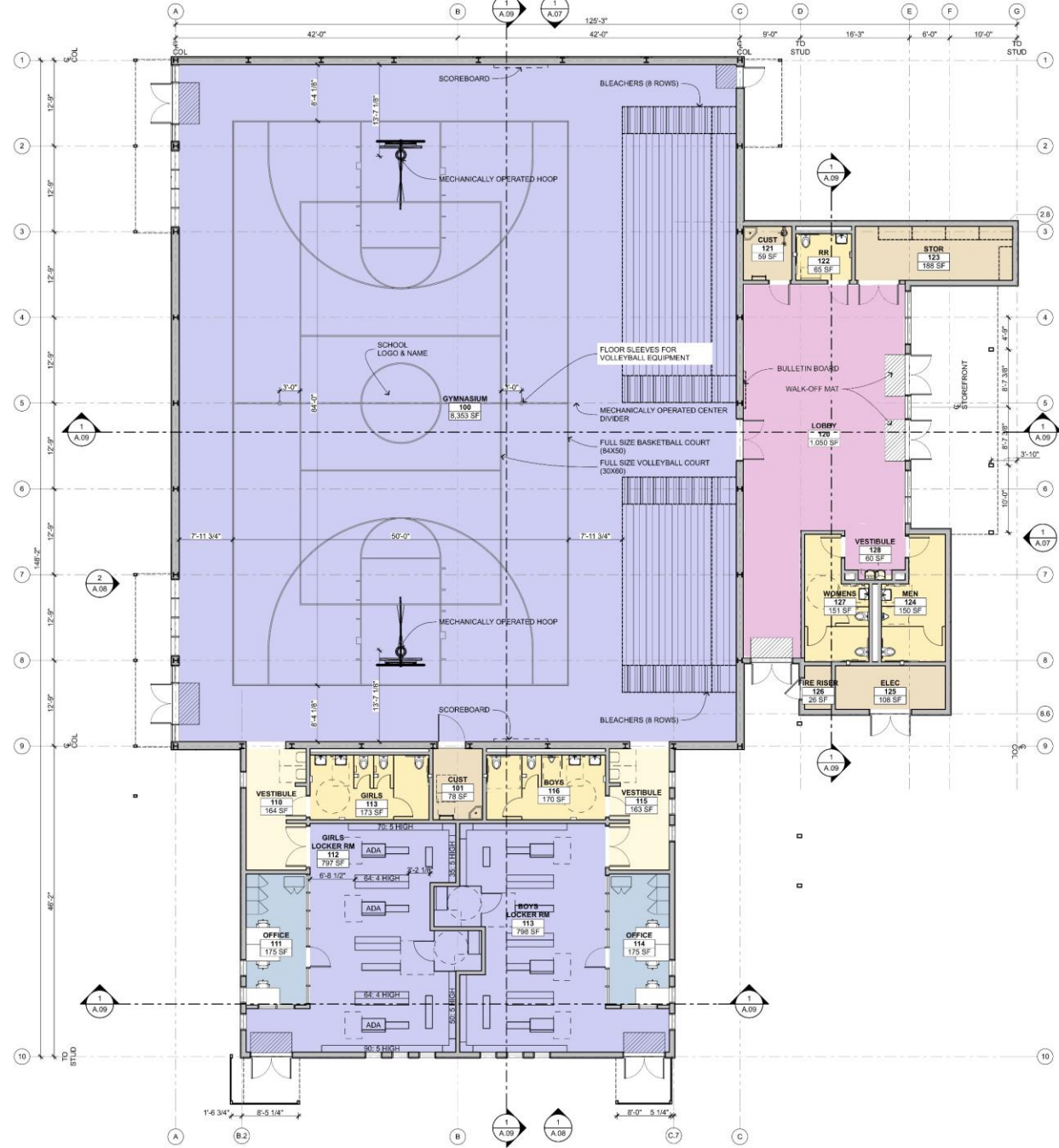


# FLOOR PLAN

BAYSIDE ACADEMY | NEW GYMNASIUM



CODE ANALYSIS Based on 2016 California Building Code (CBC)

Item	Code Reference	Proposed	Min. Req.
CONSTRUCTION TYPE - Sec 802		III-B	III-B
AUTOMATIC FIRE SUPPRESSION SYSTEM		YES	YES
OCCUPANCY GROUP - Sec 303 and 504 in A.08		A-3	I
ALLOWABLE BUILDING HT. - Table 504.2		40'	40'
ACTUAL BUILDING HT.		37'-00"	
ALLOWABLE NUMBER OF STORES - Table 504.4		1	1
ACTUAL STORES		1	
ALLOWABLE AREA FACTOR (AF) A - Table 506.2		24,000	38,000
ALLOWABLE AREA W/ FRONTAGE INCREASE - Sec 506.3.3		NOT TAKEN	
ACTUAL AREA (Bldg + ROOF CH)		8,853 SF	13,962 SF
ACTUAL AREA (Bldg + ROOF CH)		14,515 TOTAL	
MIXED OCCUPANCY ANALYSIS		8351(2400) + 5962(3800) = 8,897,818 + 22,516	651 < 1

BUILDING TOTAL AREA: 13,842 SF

FLOOR PLAN  
1/8" = 1'-0"



A.02